

LED Bollard



EDA-BOL	Segment	Wattage Range	Lumen Range
	Commercial & Residential	Selectable Wattage (18-30W)	1,440-2,400lm

Features

- Aesthetically Designed Bollards in Pressure Die Cast Aluminum Housing.
- Efficacy of 80 lm/w with 120-347V Auto-Sensing Driver.
- Field Selectable Wattage and Selectable CCT – 30-40-50K.
- IP65, Wet Location Rated with L70 @ 50,000 Hrs
- Compatible with 0-10V Dimming
- Sold as a 2 piece set (Bollard Module + Bollard Cylinder)

Specifications

Housing:

Pressure Die Cast Aluminum Housing in Black finish.

Optics:

Premium Grade Polycarbonate Diffuser

LED PCB:

Aluminum Based MCPCB for Long Life

Driver:

120-347V LED Auto Sensing driver with Operating temperature range of -40° C ~ +40° C.

LED:

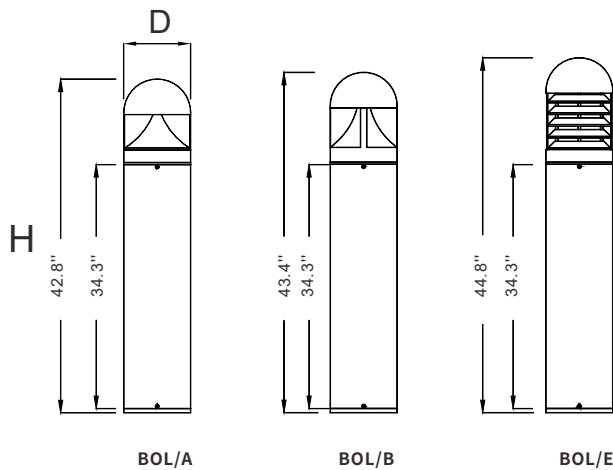
Field Selectable 30-40-50K CCT . Efficacy of 80lm/w.

Controls:

0-10V Dimming

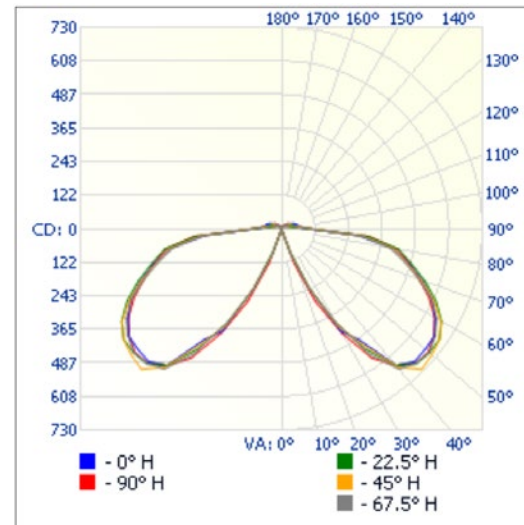


Dimensional Drawing



	D	H
EDA-BOL/A/CFIX	6"	42.8"
EDA-BOL/B/CFIX	6"	43.4"
EDA-BOL/E/CFIX	6"	44.8"

Polar Candela



Applications



Residential Complex



Parks



Golf Course

LED Bollard



EDA-BOL	Segment	Wattage Range	Lumen Range
	Commercial & Residential	Selectable Wattage (18-30W)	1,440-2,400lm

Ordering Information Example: EDA-BOL/A/CFIX/MW/MK/120-347V/BK/D

Family Name	Fixture Type	Fixture Detail	Wattage	CCT	Voltage	Finish	Dimmable
EDA (ENDURA)	BOL (Bollard)	A/CFIX (Bollard Opal PC Lensed Module + Bollard Body Cylinder) B/CFIX (Bollard no Lens Module + Bollard Body Cylinder) E/CFIX (Bollard Clear PC Lensed Module + Bollard Body Cylinder) ANCHOR-SET (Bollard Anchor Bolt Assembly)	MW (Selectable Wattage)	MK (Selectable Kelvin/CCT)	120-347V	BK (Black)	D (0-10V)

Product Specification

Ordering Code	Model Number	Wattage (W)	Input Voltage (V)	Hour Rating	Initial Lumens (lumen)	CCT (K)	CRI	Wet Location	Dimmable	Dimension D×H (inch)	Case QTY.
3682213A	EDA-BOL/A/CFIX/MW/MK/120-347V/BK/D*	30-24-18	120-347V	50,000	2400-1920-1440	30-40-50	≥70	Yes	Y	6"×42.8"	1
3682214B	EDA-BOL/B/CFIX/MW/MK/120-347V/BK/D	30-24-18	120-347V	50,000	2400-1920-1440	30-40-50	≥70	Yes	Y	6"×43.4"	1
3682215E	EDA-BOL/E/CFIX/MW/MK/120-347V/BK/D	30-24-18	120-347V	50,000	2400-1920-1440	30-40-50	≥70	Yes	Y	6"×44.8"	1
3660266	EDA-BOL/ANCHOR-SET	Bollard Anchor Bolt Assembly (3 Anchor/Bolts w/ Jig/Template)									

* When billing for the EDA-BOL/A/CFIX, a bollard PC lensed module and bollard body cylinder will be delivered.

Related Products



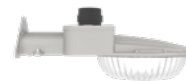
SSL-AL3



SSL-WP1TS



EDA-PT



SSL-MAL