

PRODUCT SPECIFICATION

PRODUCT — DC input , Rod antenna

MODEL NO — HB001VCR-1A HB001VCR-2A

DATE — 2023-04-20

PREPARED — 夏勇

CHECKED — 郭凯健

APPROVED — _____

CUSTOMER RECEIVED

CHECKED — _____

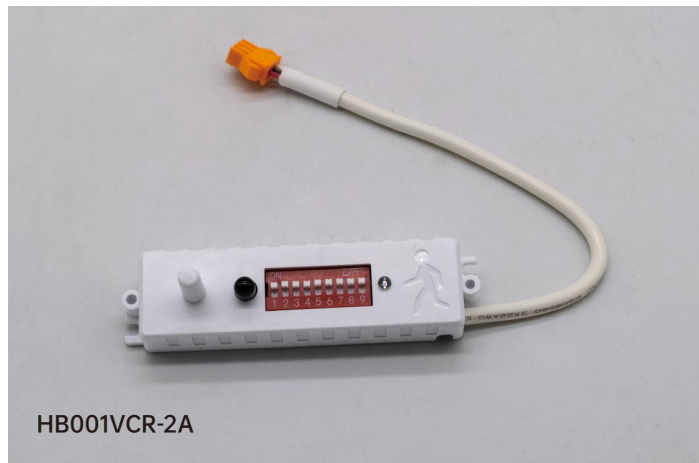
APPROVED — _____

DATE — _____

CUSTOMER — _____



HB001VCR-1A



HB001VCR-2A

DC input , Rod antenna

HB001VCR-1A

HB001VCR-2A



- Automatic On/off control with Daylight sensor. DC input
- Compact sized particularly suitable for Tri-proof light
- 5 year warranty.



On/Off Control



Detection Area



Daylight Sensor



Hold Time



Warranty



Stand-by period



Stand-by dimming level



Remote Control

Technical Data

Operating Voltage
DC:10.5-15V

Microwave Power
<0.3mW

Motion Detection
0.5-1m/s

Operating Current
<30mA

Microwave Frequency
5.8GHz±75MHz

Operating Temperature
-20°C~+60°C

Stand-by power
<0.5W

Mounting Height
Max.4m/13.12ft Ceiling Mounted

IP Rating
IP20

Control Method
On/Off 0-10V Diming

Detection Range
Max. Diameter 10m/32.8ft Ceiling Mounted

Warranty
5 years

Detection Angle
150° Wall mounted 360° ceiling mounted

Connection Type
Quick Connector

Function Setting
DIP Switch/Remote Control

Detection Angle
DIP switch : 50%/100% Remote control : 25%/50%/75%/100%

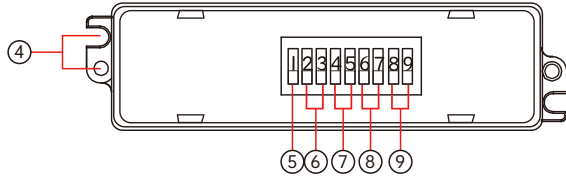
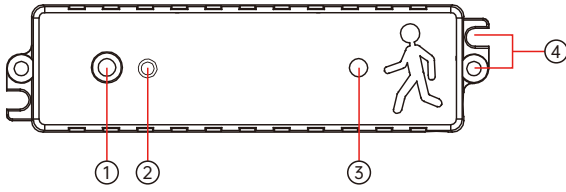
Hold Time
DIP switch :5s/30s/1min/10min Remote control : 5s/30s/1min/3min/5min/10min/20min/30min

Daylight Threshold
DIP switch :2Lux/10Lux/50Lux/Disable Remote control :2Lux/10Lux/30Lux/50Lux/80Lux/120Lux/Disable

Stand-by period
DIP switch :0s/30s/20min/+∞ Remote control :0s/10s/30s/1min/ 5min/10min/ 30min/ 60min/+∞

Stand-by dimming level
DIP switch :10% 20% 30% 50% Remote control :10% 20% 30% 50%

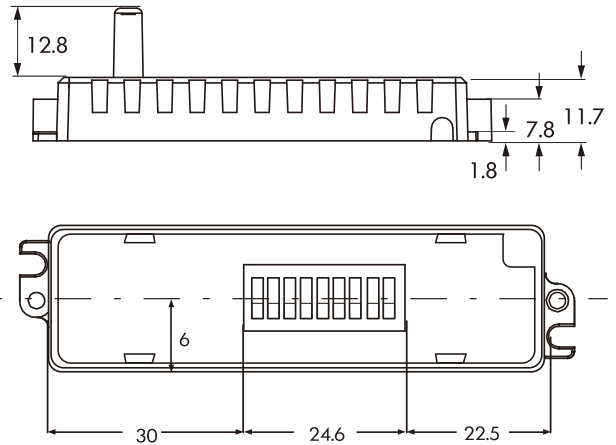
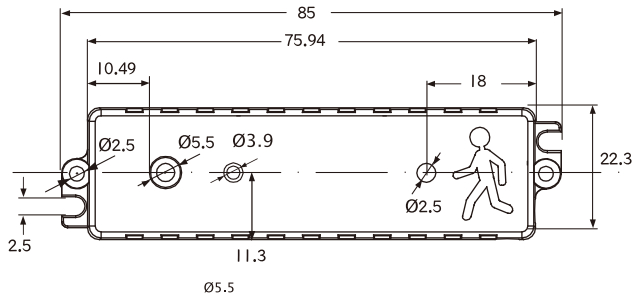
Mechanical structure



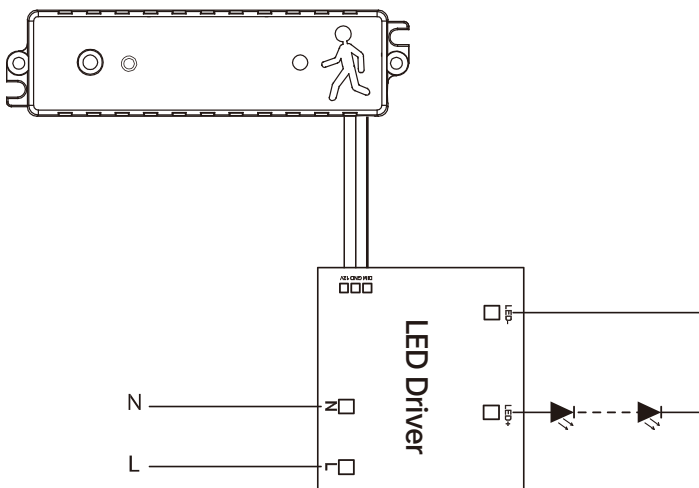
- ① Antenna module
- ② IR Receiver
- ③ Daylight Sensor
- ④ Installation Hole
- ⑤ Detection Angle
- ⑥ Hold Time
- ⑦ Stand-by dimming level
- ⑧ Stand-by Period
- ⑨ Daylight Threshold

Dimensions

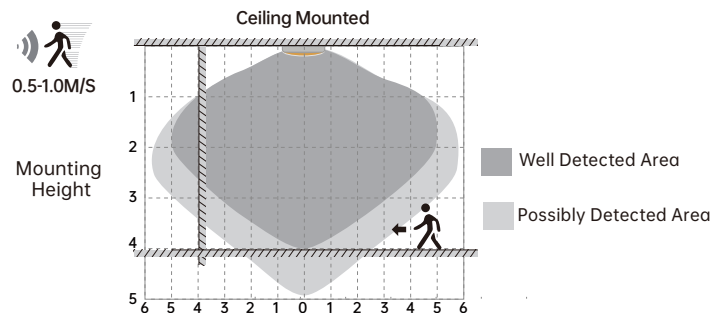
Unit:mm



Wiring Diagram



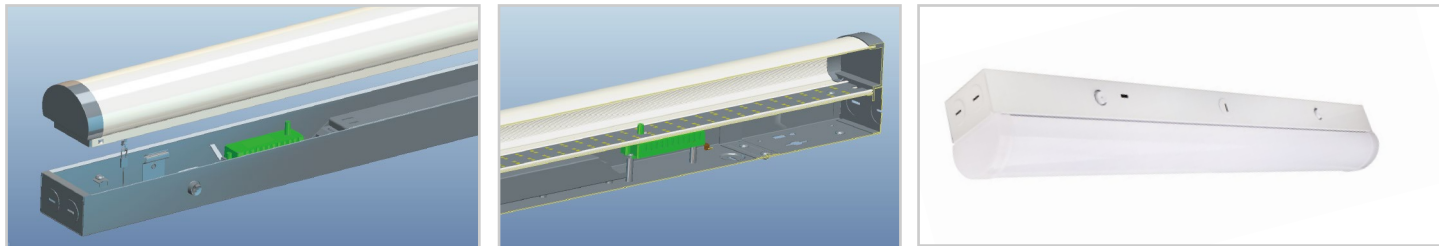
Detection Patterns



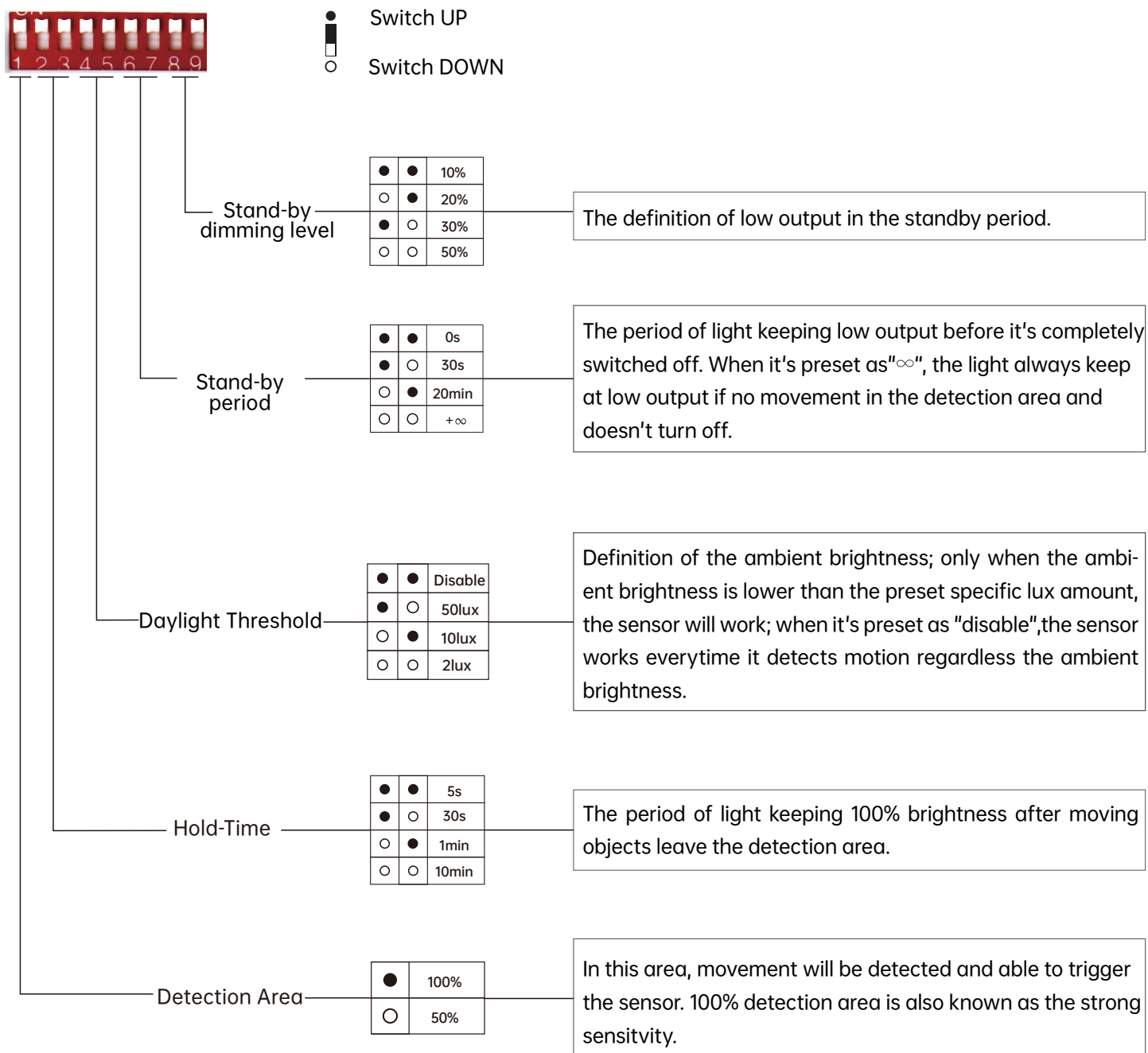
Highest mounting height is 4m

This figure indicates the maximum distance at the highest mounting height with 100% sensitivity.

Installation Method

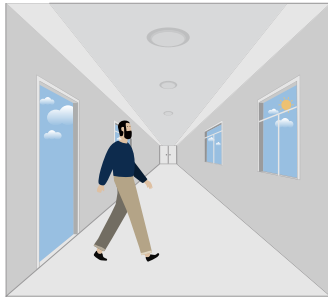


DIP Switch Setting

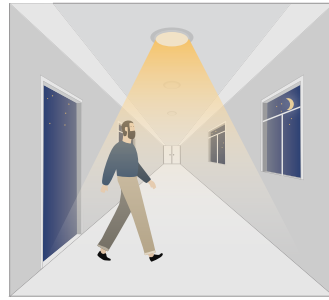


Performance

1. Automatically ON/OFF function



With sufficient daylight, even when motion detected, light remains OFF.



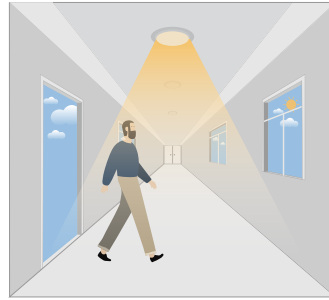
With insufficient daylight, the sensor turns light ON when motion gets detected.



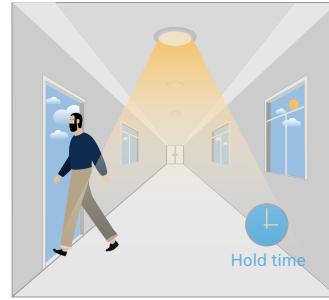
The sensor turns OFF light automatically after the holdtime when there's no motion detected.

2. Daylight Disable

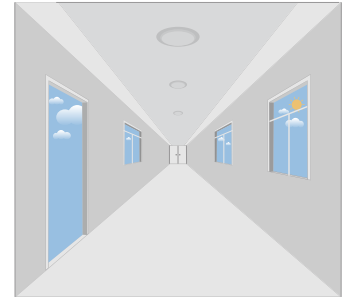
When daylight threshold is preset as "disable", the sensor turns light ON when motion gets detected, and OFF after hold-time.



The sensor turns light ON when motion gets detected.

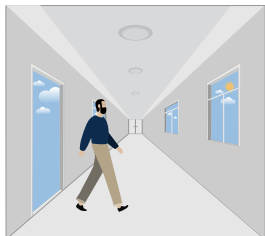


The sensor keeps light ON for holdtime period after motion leaves.

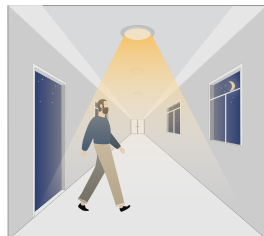


The sensor turns OFF light automatically after the holdtime.

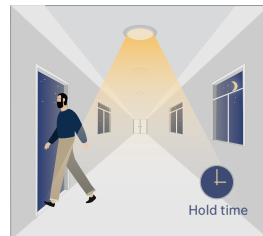
3. Corridor Function, Bi-level Dimmable



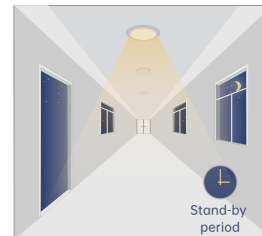
With sufficient daylight, the sensor keeps light OFF even motion gets detected.



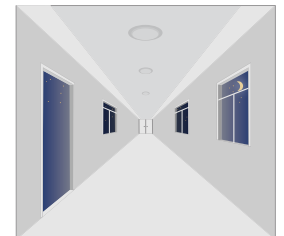
With insufficient daylight, the sensor turns light ON when motion gets detected.



After there's no motion detected, the sensor keeps light ON 100% for holdtime.



After holdtime, sensor dims light to standby dimming level for standby period.



The sensor turns OFF light automatically after the standby period when there's no motion detected.



Attention

1. Please read the instructions carefully before using this product and keep it well for all users to read at any time.
2. The sensor should be installed by qualified electrician and ensure power is off before the installation.
3. We reserve the right to modify any incorrect text, image and necessary technical parameters.
4. Any unauthorized modification is forbidden, otherwise all guarantees will be immediately invalid.

Installation precautions

1. Microwave sensor can be installed in any lamp except the one with full metal shell.
2. The detected surface cannot be shielded by metal objects.
3. Make sure the microwave module is completely exposed outside.
4. The detection surface of the sensor module shall be installed facing the detection area.
5. Should be kept away from the driver to avoid interference generation and lamp flashing.
6. Wiring must be strictly in accordance with the wiring diagram to avoid short circuit.

Application Environment

1. Suitable for indoor installation to avoid false triggering due to external factors such as rain, wind or tree swing.
2. Shall not be installed in the place with all four metal shelters and small space (such as galvanized-iron roof).
3. Shall note be mounted installation, so as to avoid false trigger caused by the lamp itself shaking.
4. Shall not be installed next to large operating machines such as ventilator/ceiling fan to avoid false triggering caused by machine vibration.

User Notes

1. Microwave can penetrate walls or glass thinner than <20mm and attenuate if thicker than <20mm.
2. The driver voltage shall be stable and float within 10%.
3. Detection area will be affected by speed of motion, mounting height and movement volume.
4. Conduct test on sunny days without the lampshade which will affect the tested lux value.

SCREEN DISPLAY, MEMORY & APPLY FUNCTION, OPTIONAL SCENES

Model: HD05R



Briefing of Button Functions

Buttons	Function	Performance
	ON/OFF	Turn ON or OFF the sensor.
	MW/PIR	Exchange from Microwave detection to PIR detection, for future use.
	Reset	Press it to start detection programming; before pressing any other buttons, the screen shows default programming (Detection Area 100%, Holdtime 5S, Daylight Disable, Standby Dimming 10%, Standby Period 0S)
	Start	Press it before you try to memorize program into the remote; After pressing it, S on the screen will blink and keeping blinking while making the program.
	Memory	Press it after programming, the blinking S will become a solid M, that means the program has been well memorized.
	Apply	Press it to deliver the preset program to the specific sensors; every press will make the whole screen blink gently.
	Detection area	Also known as "sensitivity", 100% means the highest sensitivity and longest distance. Press it, specific icon on the screen will blink and press the + - buttons to adjust.
	Hold time	The period that light will stay illuminated 100% after no motion's detected; Press it, specific icon on the screen will blink and press the + - buttons to adjust.
	Daylight Threshold	The preset lux level to compare with ambient brightness when motion gets detected; Press it, specific icon on the screen will blink and press the + - buttons to adjust.
	Stand-by period	The period after holdtime, during which the light keeps standby dimming level; Press it, specific icon on the screen will blink and press the + - buttons to adjust.
	Stand-by dimming level	After holdtime, the light will dim from 100% to optional standby dimming levels; Press it, specific icon on the screen will blink and press the + - buttons to adjust.
	UP	The main functional buttons to adjust the factors to wanted level.
	DOWN	
	POWER	Supports to manually change dimming output in detection mode; Press it, specific icon on the screen will blink and press the + - buttons to adjust.
	Test mode	Supports to check if the sensor works correctly with a short 2S holdtime; Press it and the holdtime will change to 2S, and it can't be memorized.

How to Use HD05R

1. Manually Dimming In Convention Mode

- ① Press ON/OFF button to turn ON the light
- ② Press + - buttons to adjust, every press will change the number on the screen

For some sensors that are not fully supporting HD05R:

- ① Press ON/OFF button to turn ON the light
- ② Please keep pressing - button until it shows 10% on the screen, keep the button again then it will start to dim down.
- ③ Please keep pressing + button until it shows 100% on the screen, keep the button again then it will start to dim up.

2. Manually Dimming In Detection Mode

- ① Press ON/OFF button to turn ON the light
- ② Press SCENE button to enter into the detection mode
- ③ Press POWER% button, the PW icon will blink on the screen
- ④ Press + - buttons to adjust dimming output

For some sensors that are not fully supporting HD05R:

- ① Press ON/OFF button to turn ON the light
- ② Press SCENE button to enter into the detection mode
- ③ Press POWER% button, the PW icon will blink on the screen
- ④ Please keep pressing - button until it shows 10% on the screen, keep the button again then it will start to dim down.
- ⑤ Please keep pressing + button until it shows 100% on the screen, keep the button again then it will start to dim up.

3. Programming the Detection Mode

@ the 1st Sensor

- ① Press ON/OFF button to turn ON the light
- ② Press SCENE button to enter into the detection mode
- ③ Press START button, the S icon will blink on the screen
- ④ While S is blinking, Press the functional buttons of Detection Area, Holdtime, Standby Dimming, Standby Period and Daylight Threshold, press + - buttons to adjust.
- ⑤ Press MEMORY button to save the program in the remote
- ⑥ Press APPLY button to deliver the program to the sensors.

@ the rest sensors

- ① Press ON/OFF button to turn ON the light
- ② Press SCENE button to enter into the detection mode
- ③ Press APPLY button to deliver the save program.

4. Recall The Program

- ① Press ON/OFF button to turn ON the light
- ② Press SCENE button to enter into the detection mode
- ③ Press APPLY button, the save program information will show

5. Test Mode

- ① Press ON/OFF button to turn ON the light
- ② Press SCENE button to enter into the detection mode
- ③ Press TEST(2S) button, the holdtime will change to only 2S; after 2S, sensor will turn OFF the light.

* Please note this test mode won't be saved in the remote.

HD05R

