

Surge Protection Device

SSL-AL3/SPD20, SSL-AL3/SPD10



Features

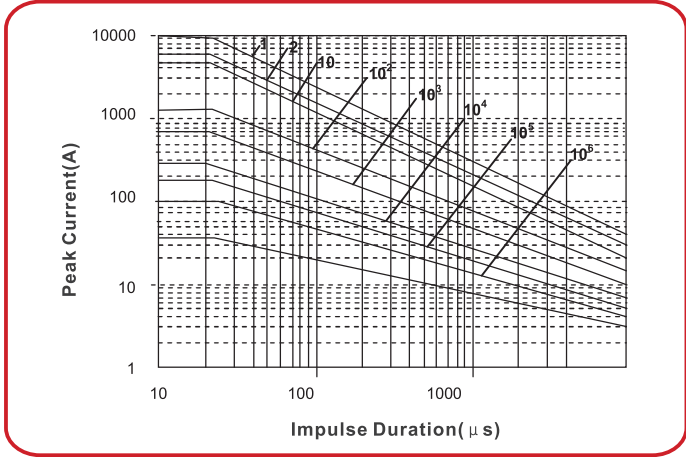
- ◆ Applicable to class I or II luminaire
- ◆ Protection mode: L-N、 L-G、 N-G
- ◆ Built in thermal separation function, higher safety
- ◆ Parallel and series connection mode optional , with its own lead
- ◆ Excellent surge impact resistance and low residual voltage
- ◆ Miniature size and convenient for embedded installation
- ◆ IP65 Water-proof and Dust-proof.

Electrical Data

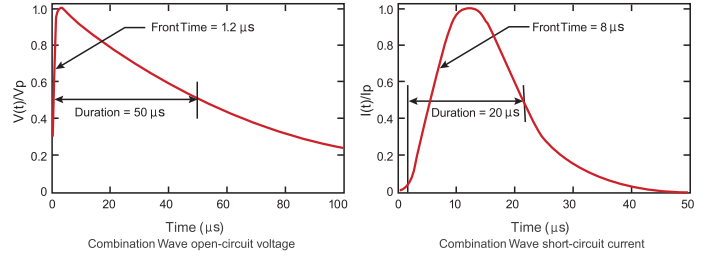
| Product model | SSL-AL3/SPD20 | SSL-AL3/SPD10 |
|--|--|--|
| SPD according to UL1449 | Type 5 | Type 5 |
| Nominal operating voltage/ U_n | 120-347V(50/60Hz) | 120-347V(50/60Hz) |
| Max. continuous operating voltage/MCOV | 385V(50/60Hz) | 385V(50/60Hz) |
| Nominal discharge current/ I_n (8/20 μ s) | 10kA | 5kA |
| Max. discharge current/ I_{max} (8/20 μ s) | 20kA | 10kA |
| Open-circuit voltage/ U_{oc} (1.2/50 μ s&8/20 μ s) | 20kV | 10kV |
| Measured limiting voltage/MLV(@ I_n) | L-N: 1705V, L-G: 1755V, N-G: 1775V | L-N: 1420V, L-G: 1560V, N-G: 1550V |
| Connecting wires | UL1015 16AWG | UL1015 16AWG |
| Connection mode | Parallel connection | Parallel connection |
| Enclosure material | Double wall heat shrinkable tube UL94-V0 | Double wall heat shrinkable tube UL94-V0 |
| Operating temperature range | -40 $^{\circ}$ C~+85 $^{\circ}$ C | -40 $^{\circ}$ C~+85 $^{\circ}$ C |
| Degree of protection | IP65 | IP65 |
| Product size | L105 \times W29 \times H18mm | L105 \times W24 \times H18mm |
| Weight(one piece) | 70g | 50g |
| Packing quantity | 200pcs/CTN | 250pcs/CTN |
| Package size | L428 \times W222 \times H205mm | L428 \times W222 \times H205mm |

SSL-AL3/SPD20

Repetitive surge capability



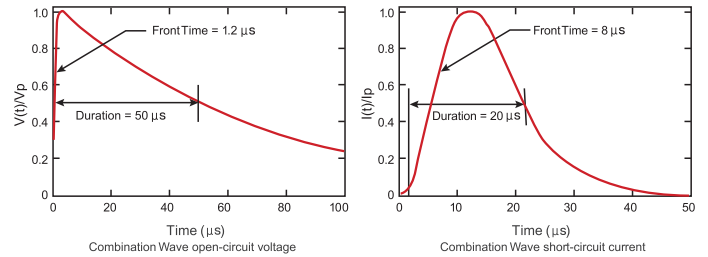
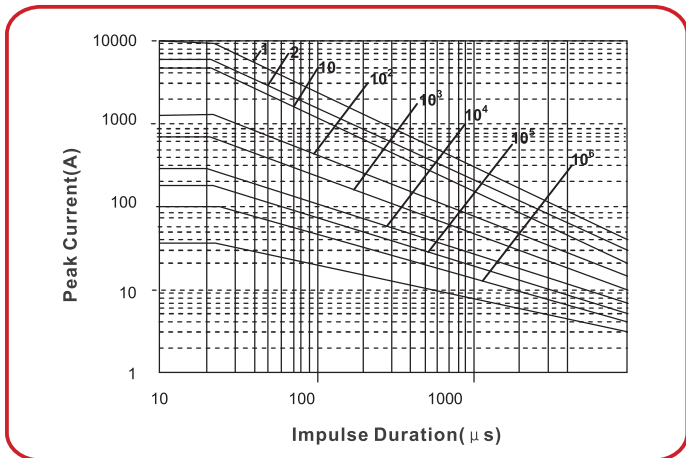
Test waveform



| Lightning surge test (8/20 μs) | | | |
|--------------------------------|---------|--|---------|
| Surge | Strikes | Lightning surge test (8/20 μs & (1.2/50 μs)) | |
| 20000A | 1 | Surge | Strikes |
| 15000A | 2 | 10kA/20kV | 120 |
| 10000A | 15 | | |

Notes : IEC 61000-4-5 surge immunity test waveforms: 1.2/50μs open circuit voltage and 8/20μs short circuit current.

SSL-AL3/SPD10

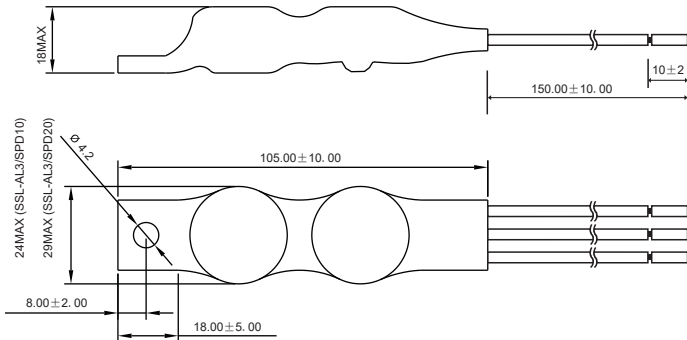


| Lightning surge test (8/20 μs) | | | |
|--------------------------------|---------|--|---------|
| Surge | Strikes | Lightning surge test (8/20 μs & (1.2/50 μs)) | |
| 10000A | 1 | Surge | Strikes |
| 7000A | 2 | 5kA/10kV | 120 |
| 5000A | 15 | | |

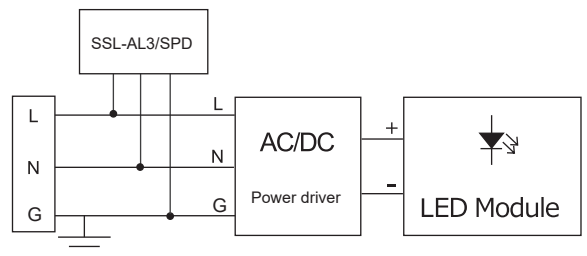
Notes : IEC 61000-4-5 surge immunity test waveforms: 1.2/50μs open circuit voltage and 8/20μs short circuit current.

Dimensions

Unit : (mm)



Application / Installation schematic



Installation instructions:

1. SPD should be installed near the AC side of LED power driver.
2. Black-phase line (L); White-neutral line (N); Green-ground line (G).
3. Fixed with one M4 screw.