

Installation Instruction

Linear Recessed Luminaire

Applicable models:
ZNTH60-RD

ELECTRICAL SHOCK HAZARD



WARNING

Disconnect the Electrical supply at the service panel (fuse or circuit breaker box). Failure to do so could result in serious injury.

Only qualified electricians should install this luminaire and Must conform to the Canadian Electrical Code Part 1 or the NEC, and any local codes and ordinances. Ensure that only proper tools and materials to complete the installation are available prior to attempting to install this luminaire.

Read all instructions prior to installing this product.

This product has multiple installation methods for various ceiling types. Follow directions closely. This unit is setup for 9/16 Grid ceilings/Narrow Flange style.

IMPORTANT CALCULATION FOR CONTINUOUS ROW MOUNTING

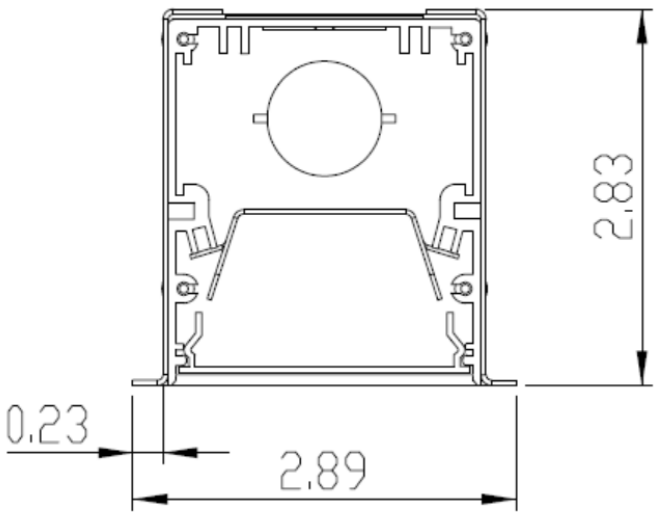
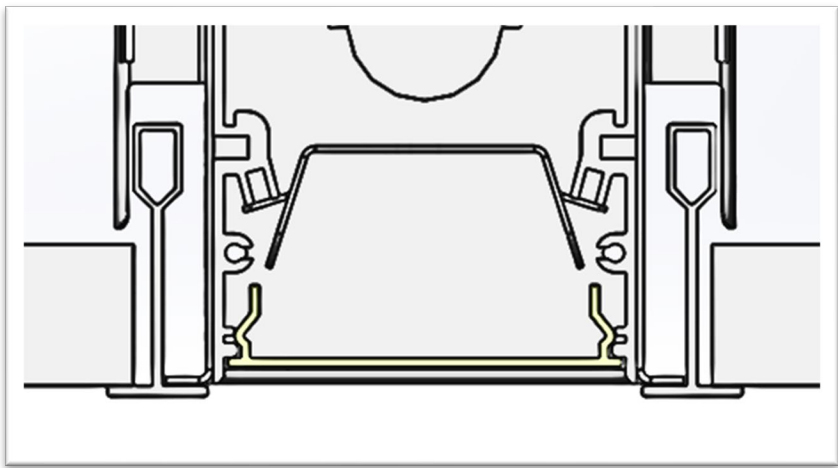
For Row Mounting: Calculate the luminaire row total amperage from input current on product label to prevent from being over the current rating of the power feed cord. Maximum of 6 amps per power feed.

When row length amperage calculated exceeds 6 amps additional a power feed connection must be used at intervals of 6 amps or less.

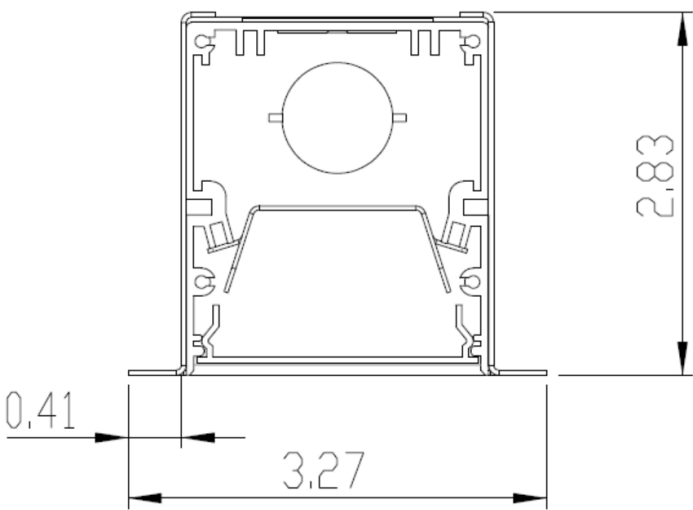
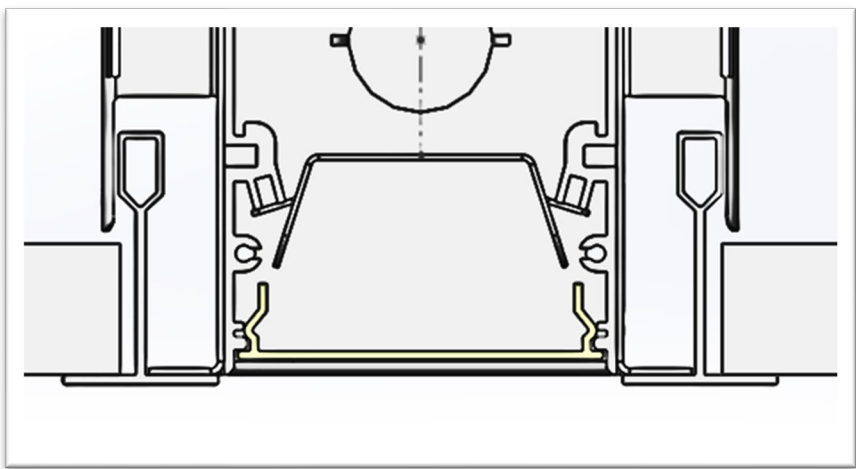
For Row Mounting DO NOT CONNECT units on the floor – They must be connected after RECESSED mounting.

MOUNTING TYPES & DIMENSION

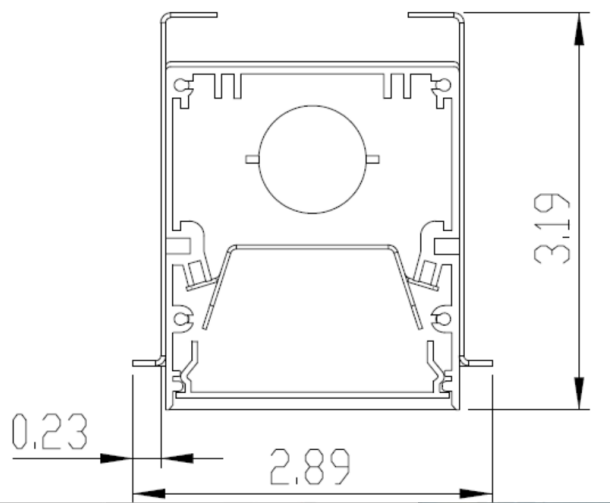
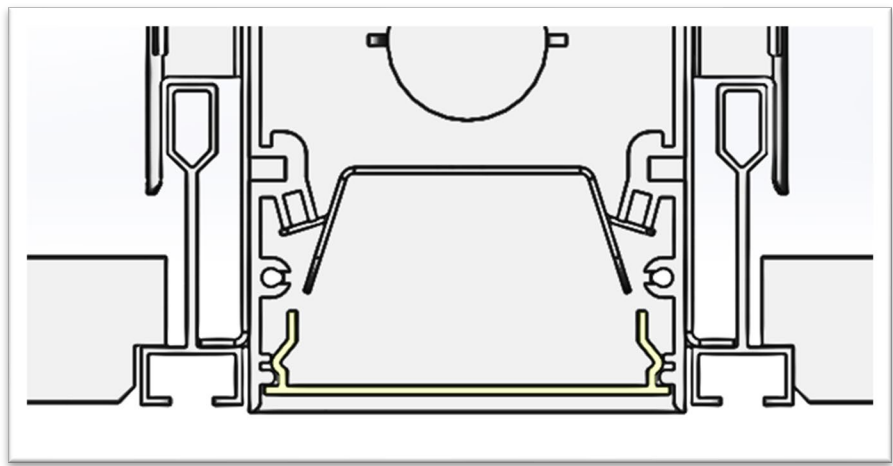
9/16” Grid Tegular/Lay-In



15/16” Grid Tegular/Lay-In



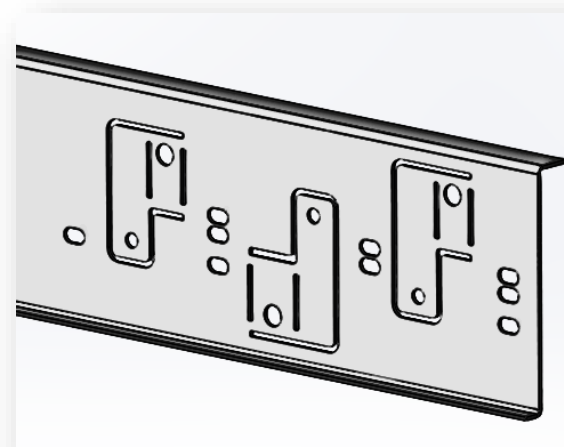
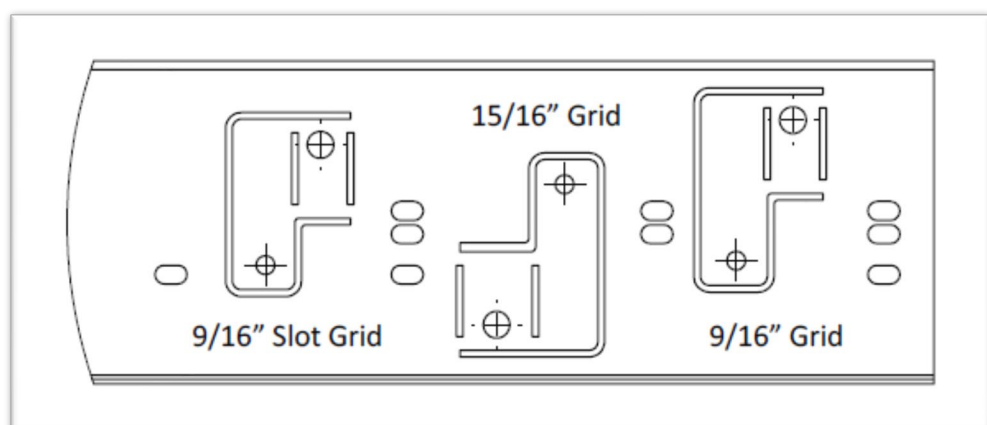
9/16” Slot Grid



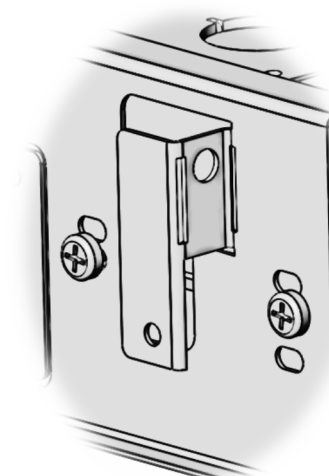
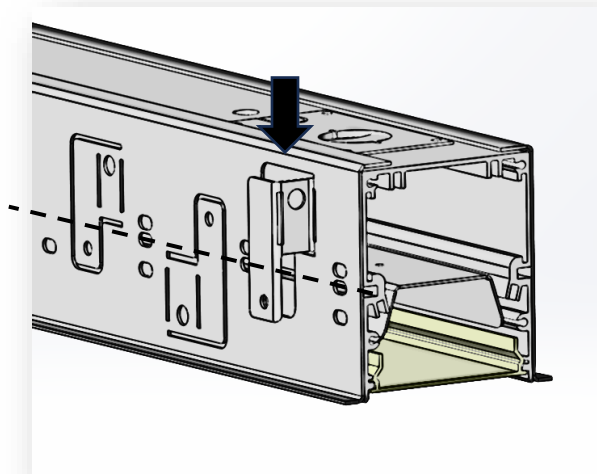
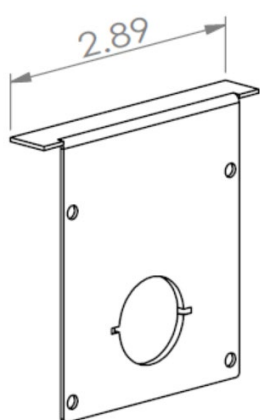
Unit type	Fixture Length	Recessed Housing sizes	End Cap Flange Size	Total with end caps
Individual	4FT	47.03"	0.45"	47.93"
Individual	6FT	71.03"	0.45"	71.93"
Individual	8FT	95.03"	0.45"	95.93"
Start/End	4FT	47.45"	0.45"	47.9"
Start/End	6FT	71.45"	0.45"	71.9"
Start/End	8FT	95.45"	0.45"	95.9"
Joiner	4FT	48"	No End Caps	
Joiner	6FT	72"	No End Caps	
Joiner	8FT	96"	No End Caps	

Linear Recessed Fixtures - Grid Mounting options

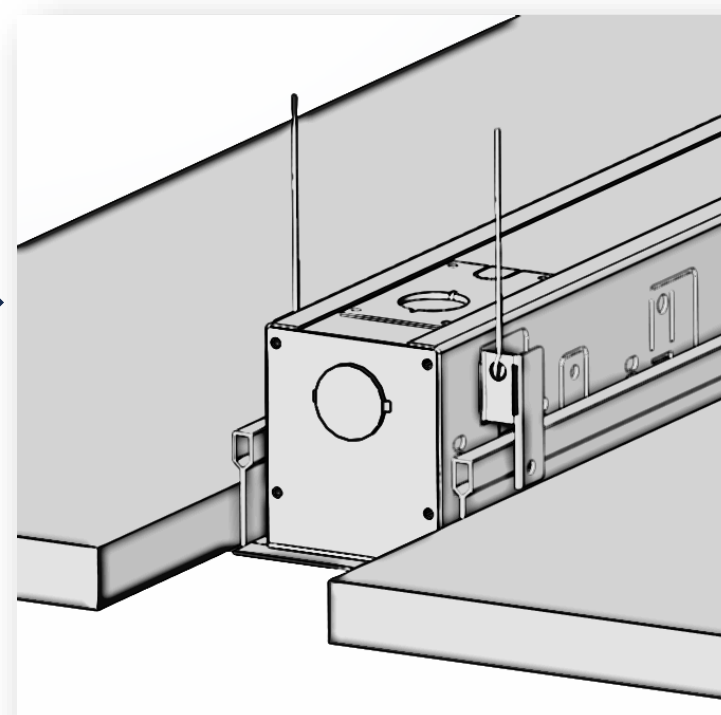
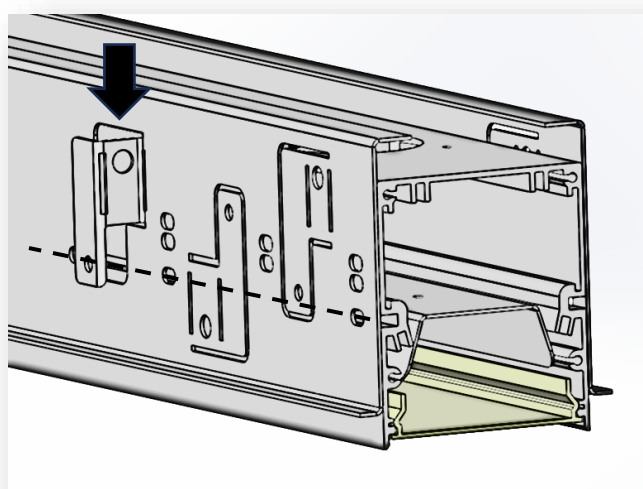
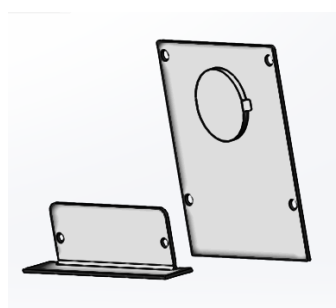
The side mounting bracket rails can be adjusted for the various grid ceiling types. Consult images below for correct mounting position according to Ceiling Type. Dashed lines indicate the correct hole position. Find match mark to bend hanger bracket out by hand . End caps will need to be changed for other versions. Default set up is 9/16" Grid.



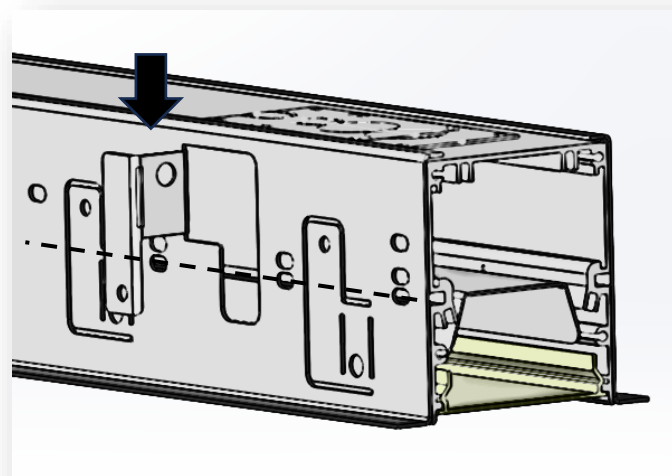
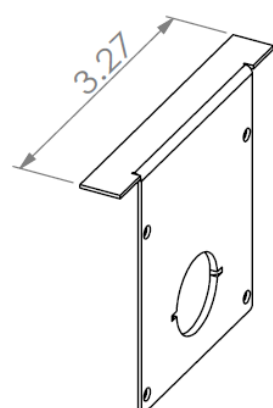
9/16" Grid



9/16" Slot Grid



15/16" Grid

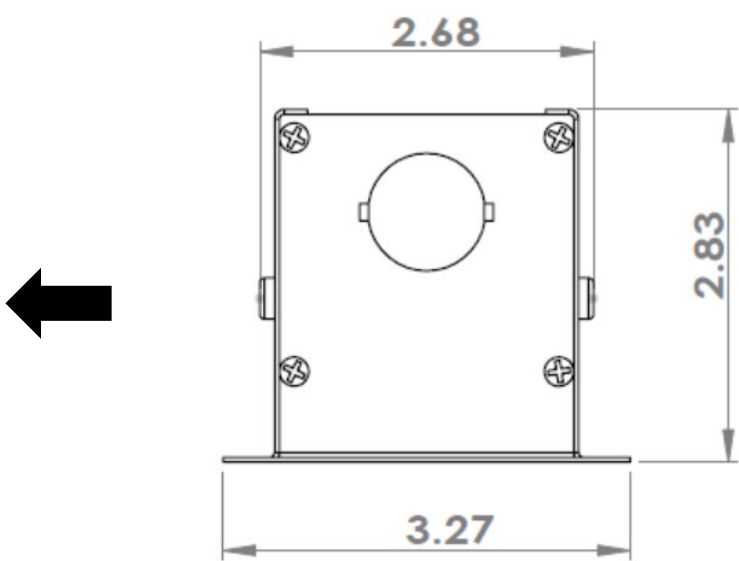
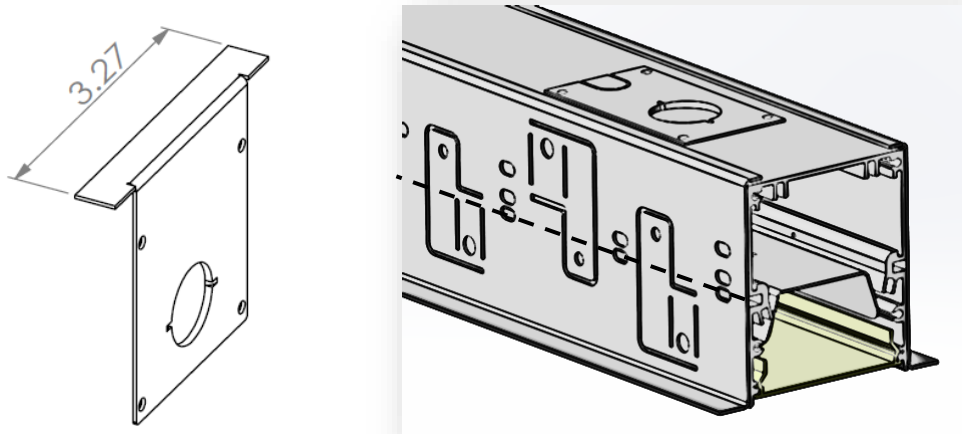


Install fixture into opening Between Tee Grid. attach support wiring to the building and fixtures after the fixture installed.

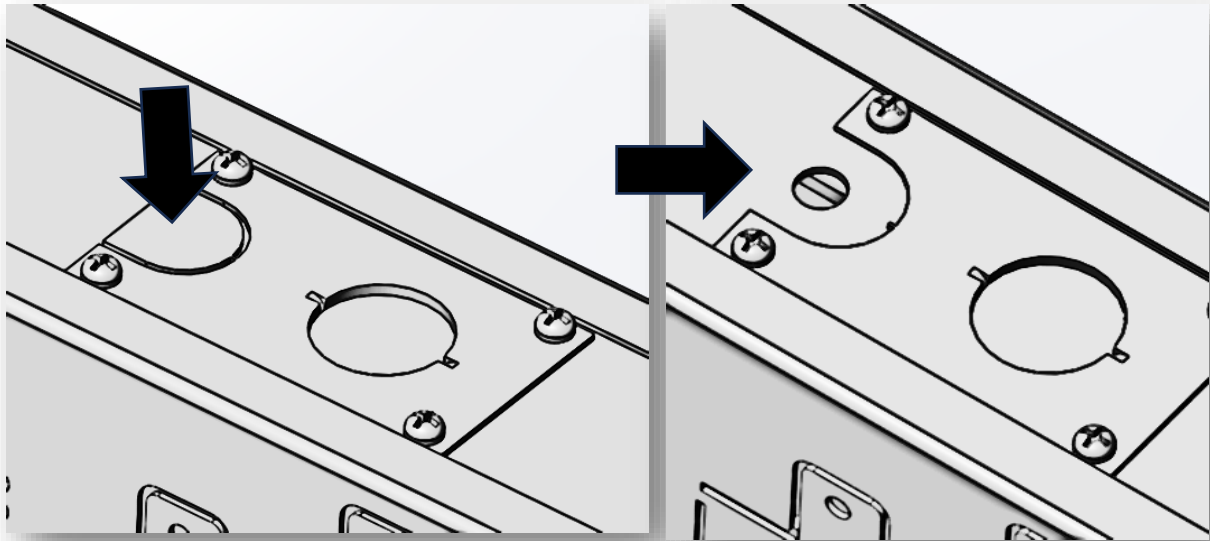
Linear Recessed Fixtures - Drywall Flange mount

The side mounting bracket rails can be adjusted for 2 different flange widths. End caps will need to be changed for other versions. Default set up is 9/16" Grid (smallest flange). DO NOT bend out T-Bar clip

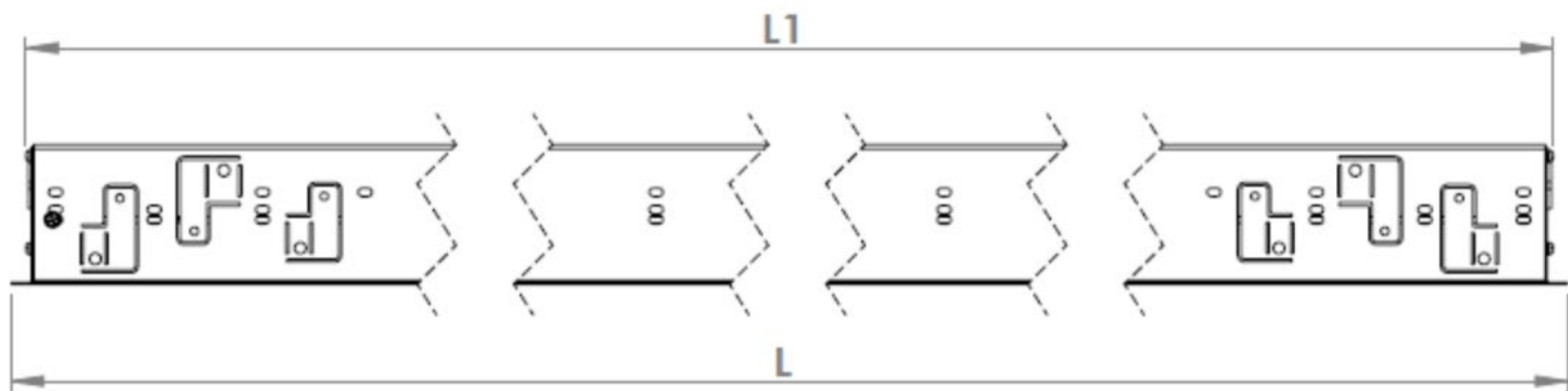
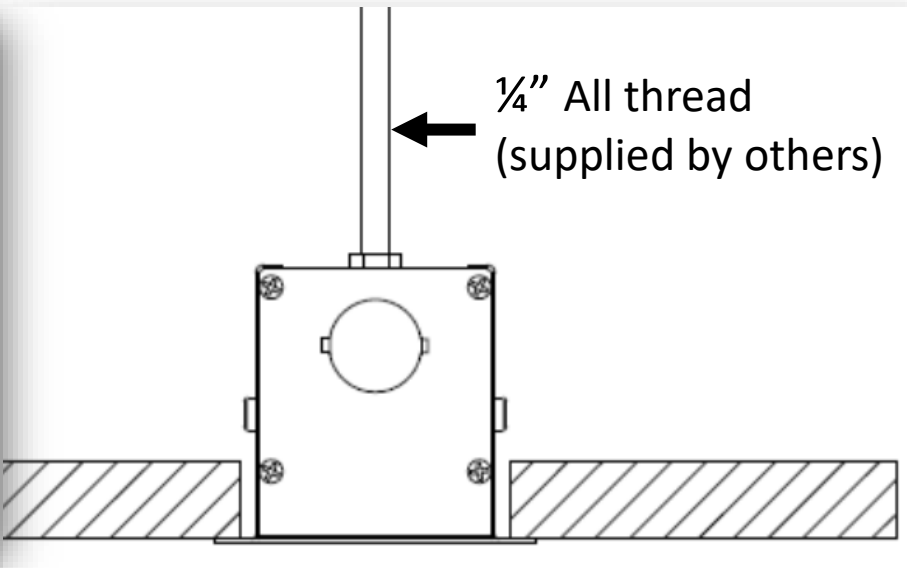
15/16" Grid



Removal of tabs on the plates



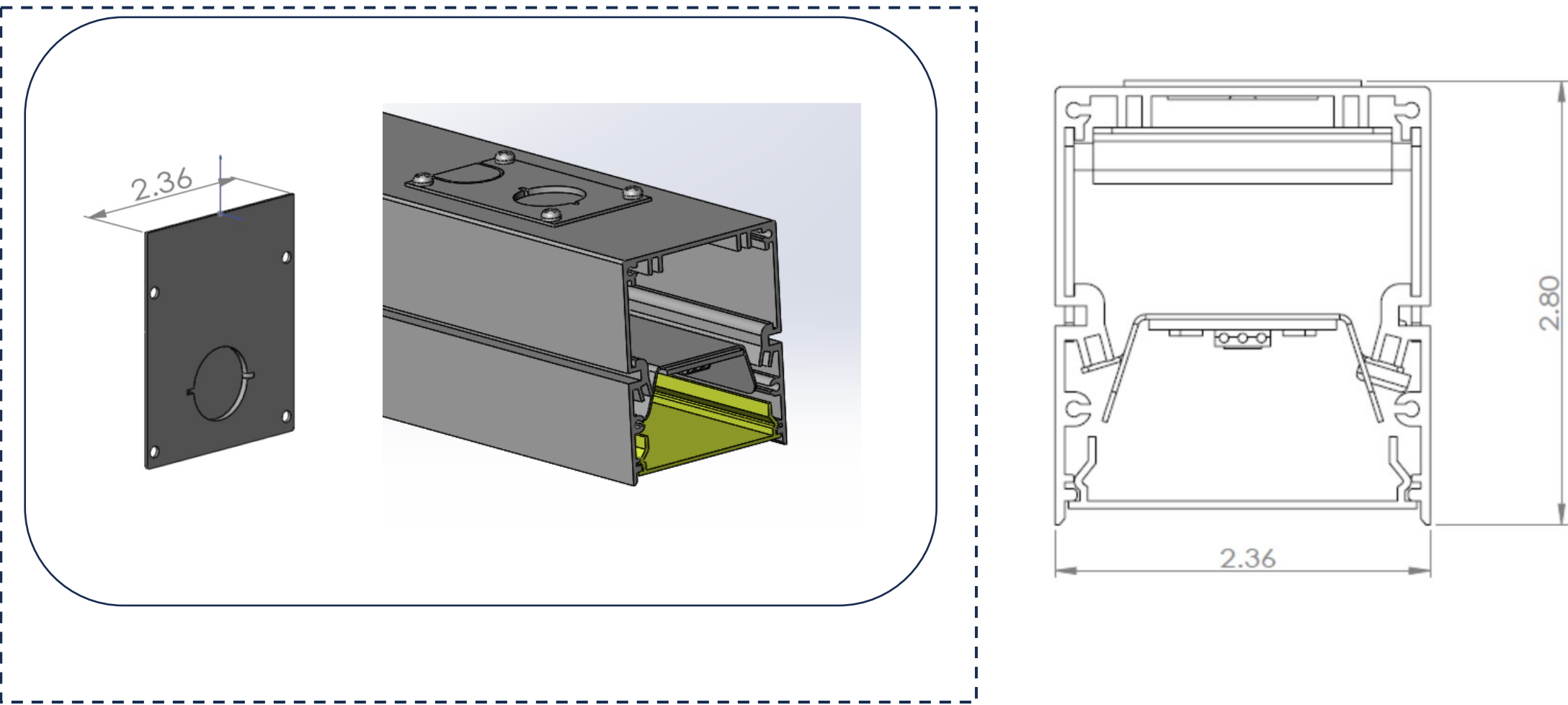
installation threaded rod



Size	2ft	3ft	4ft	5ft	6ft	7ft	8ft
L	23.93"	35.93"	47.93"	59.93"	71.93"	83.93"	95.93"
L1	23.34"	35.34"	47.34"	59.34"	71.34"	83.34"	95.34"
Cut hole	23.38"*2.72"	35.38"*2.72"	47.38"*2.72"	59.38"*2.72"	71.38"*2.72"	83.38"*2.72"	95.38"*2.72"

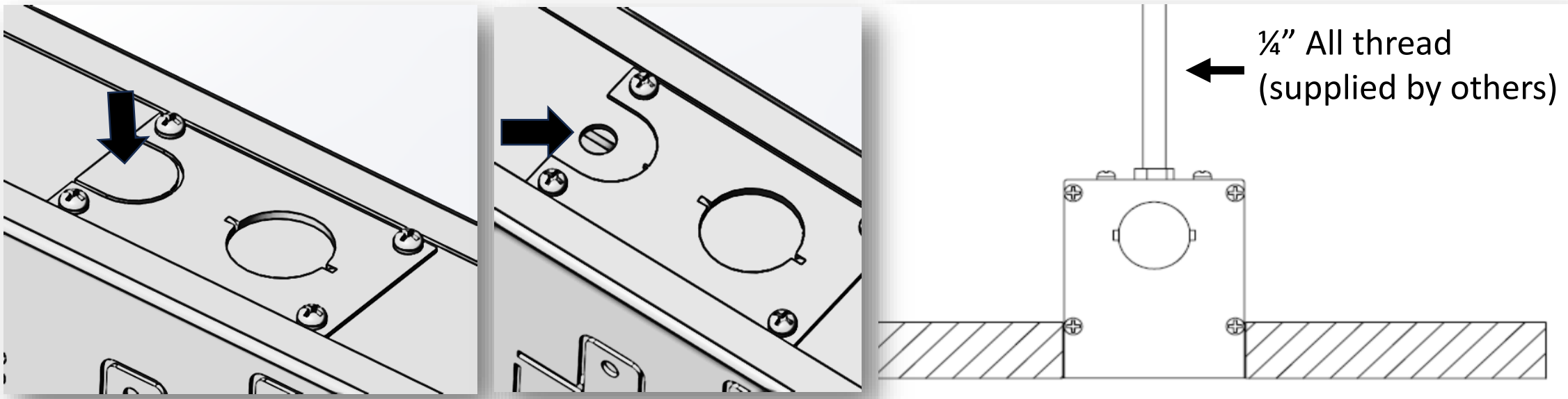
Linear Recessed Fixtures - Drywall/Hard Ceiling Trimless mount

Remove the side mounting bracket rails. Change end cap for flat version. Using ¼” all-thread (by others) secured to structure above install housing through mounting holes provided.



Removal of tabs on the plates

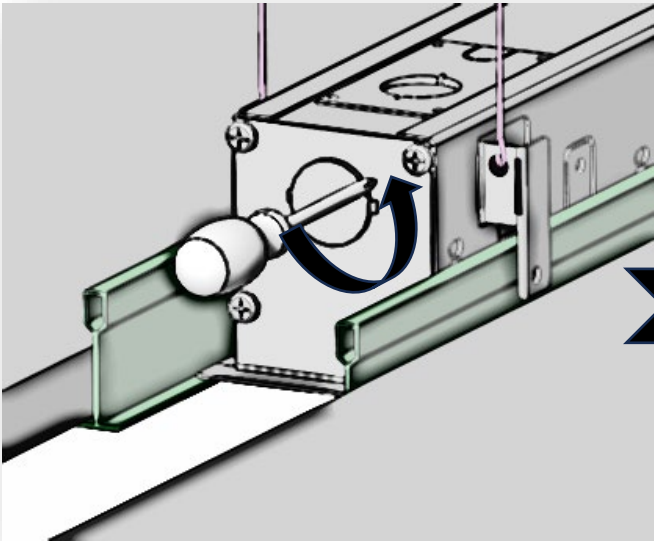
installation threaded rod



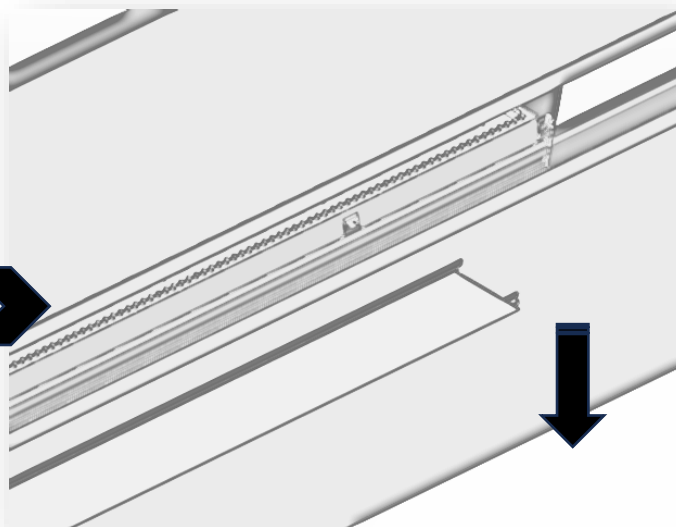
Size	2ft	3ft	4ft	5ft	6ft	7ft	8ft
L	23.34"	35.34"	47.34"	59.34"	71.34"	83.34"	95.34"

CONTINUOUS INSATLLATION FOR DIRECT

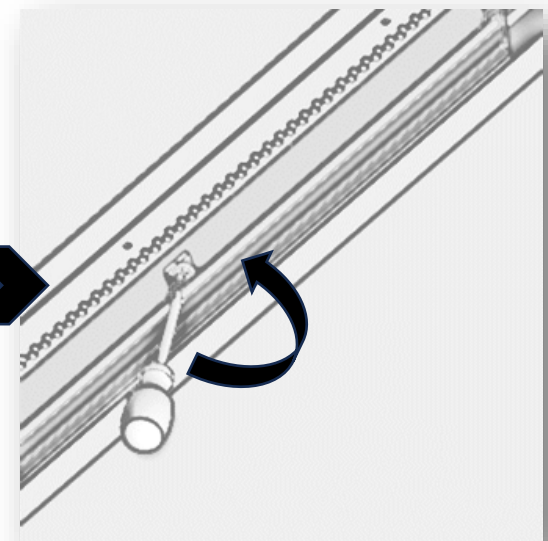
Loose screws and
remove End cap



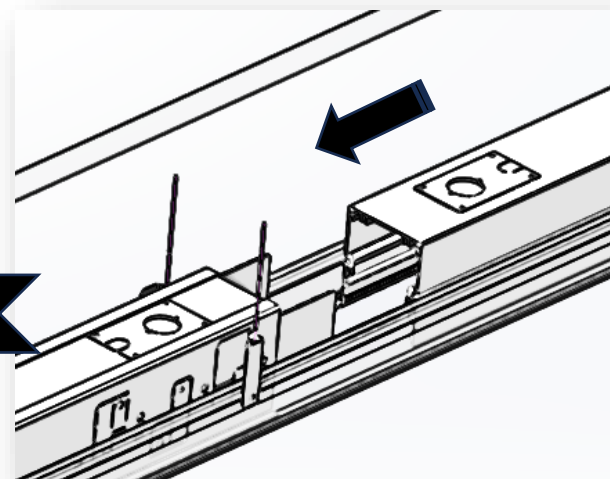
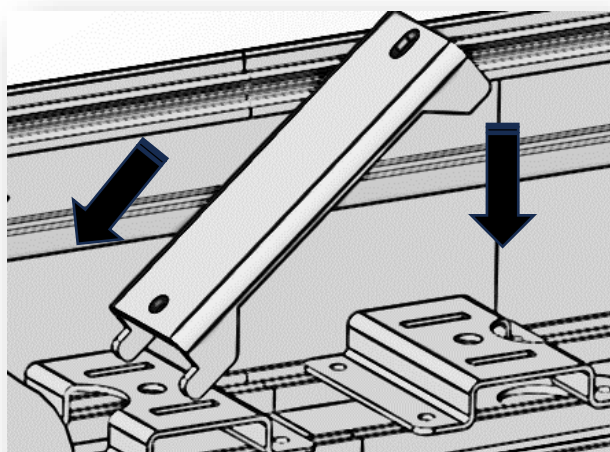
Remove diffuser



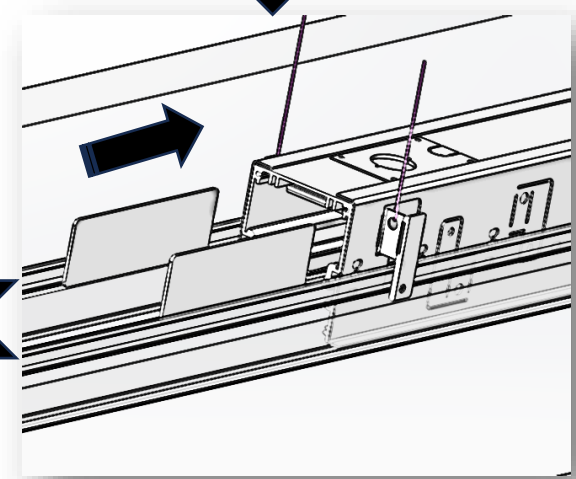
Loose screws and
remove Gear tray



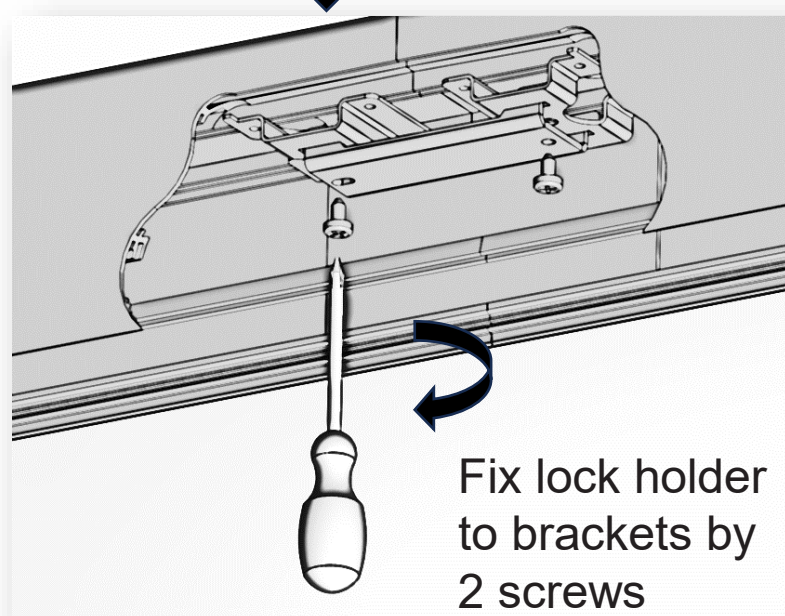
Insert Joint lock holder
to brackets



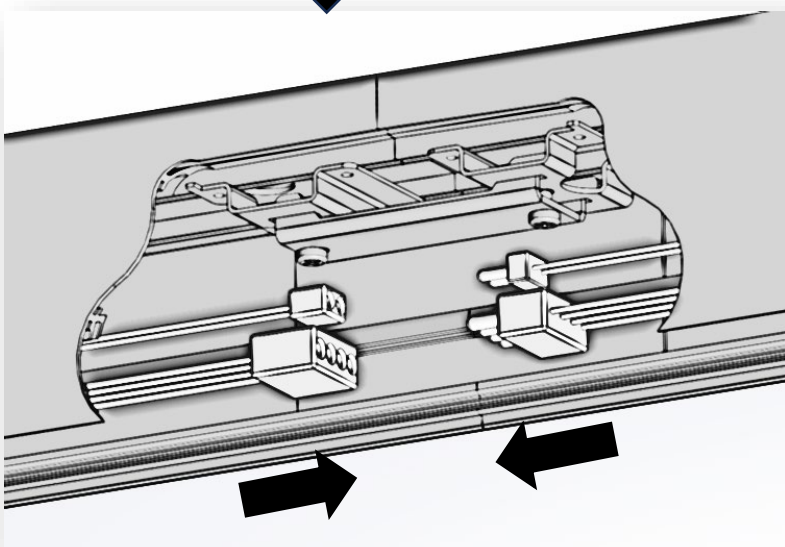
Joint housings



Insert splice plate to housing



Fix lock holder
to brackets by
2 screws






CONNECT WIRING

WIRING DIAGRAM

120-347V
DIMMING 0-10V

BLACK			LINE
WHITE			NEUTRAL
GREEN			GROUND
PURPLE			DIMMING +
PINK			DIMMING -

Included Accessories in the Package

1	2	3
		
AL linear light joint lock holder	Joint plate for ZNTH60 RECESS	Lens removal tool
1×1	1×2	1×1